

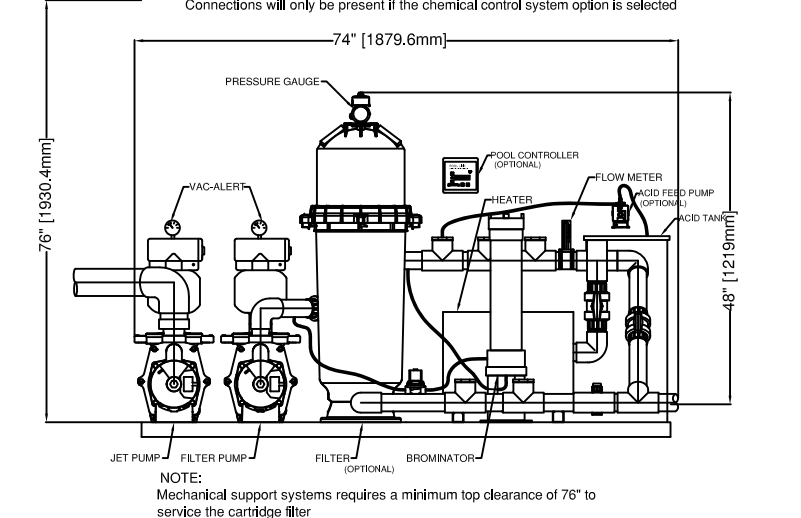
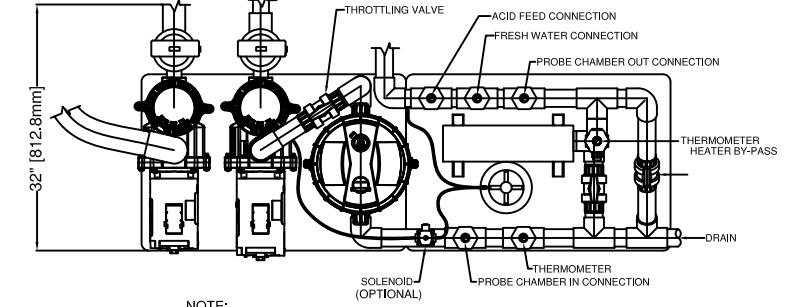
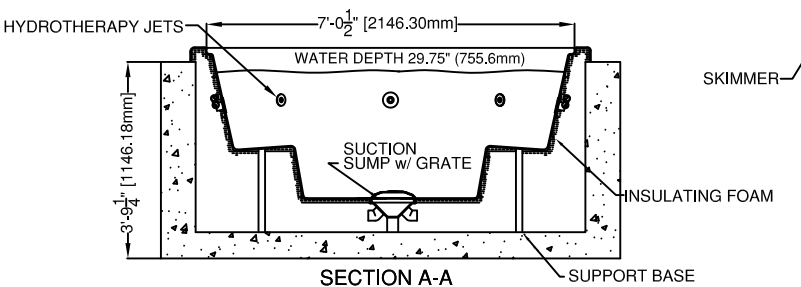
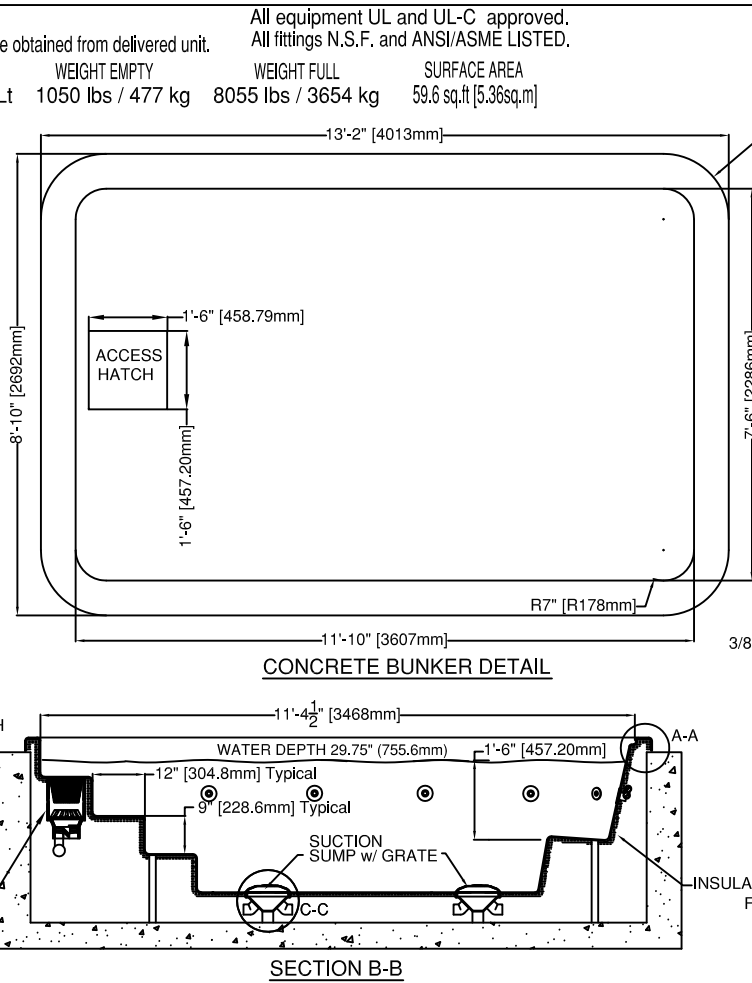
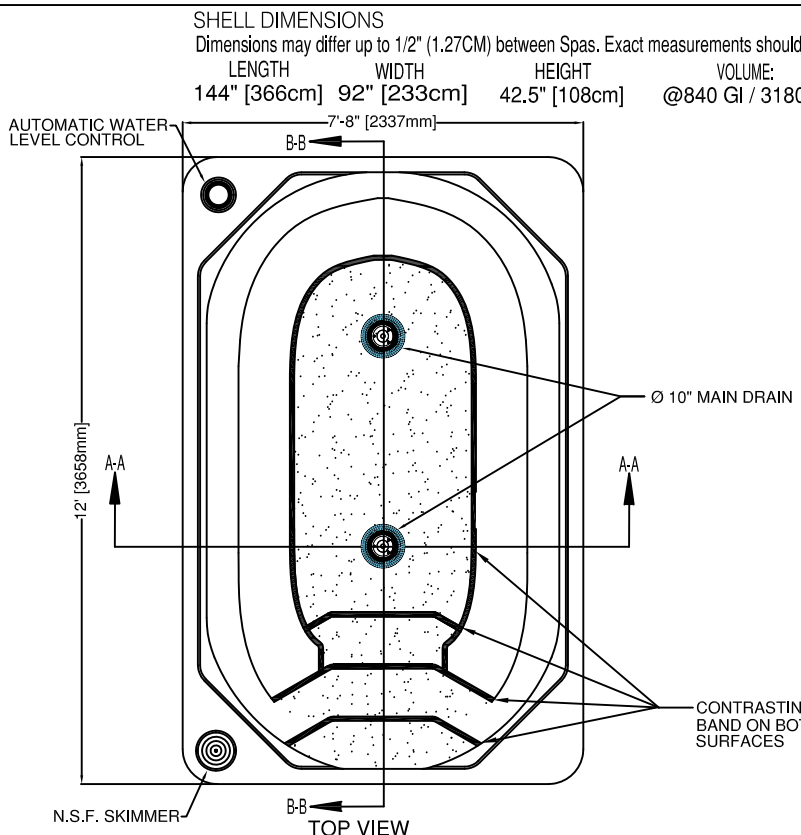
This drawing and the ideas, concepts, illustrative and written information represented thereby are the confidential and proprietary property of HYDROTHER. Reproduction of all or any part of this drawing or prints thereof, or any other unauthorized utilization of any confidential and proprietary property contained herein without the permission of HYDROTHER, is forbidden.

No.	Date	Description
Revisions		

HYDROTHER
135 MATHESON BLVD. E.
MISSISSAUGA, ONTARIO
CANADA
L4Z 1R2

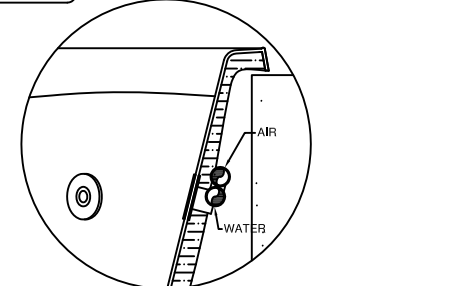
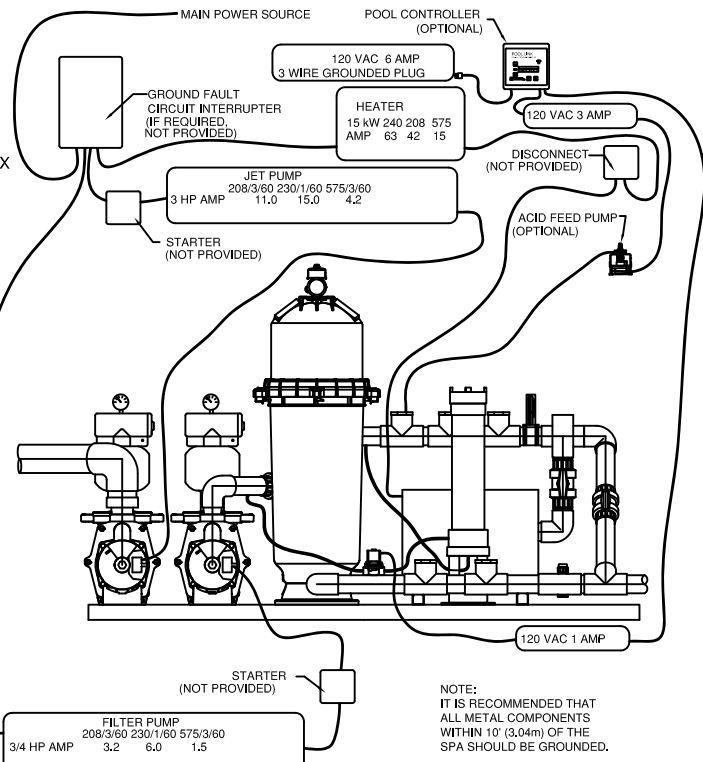
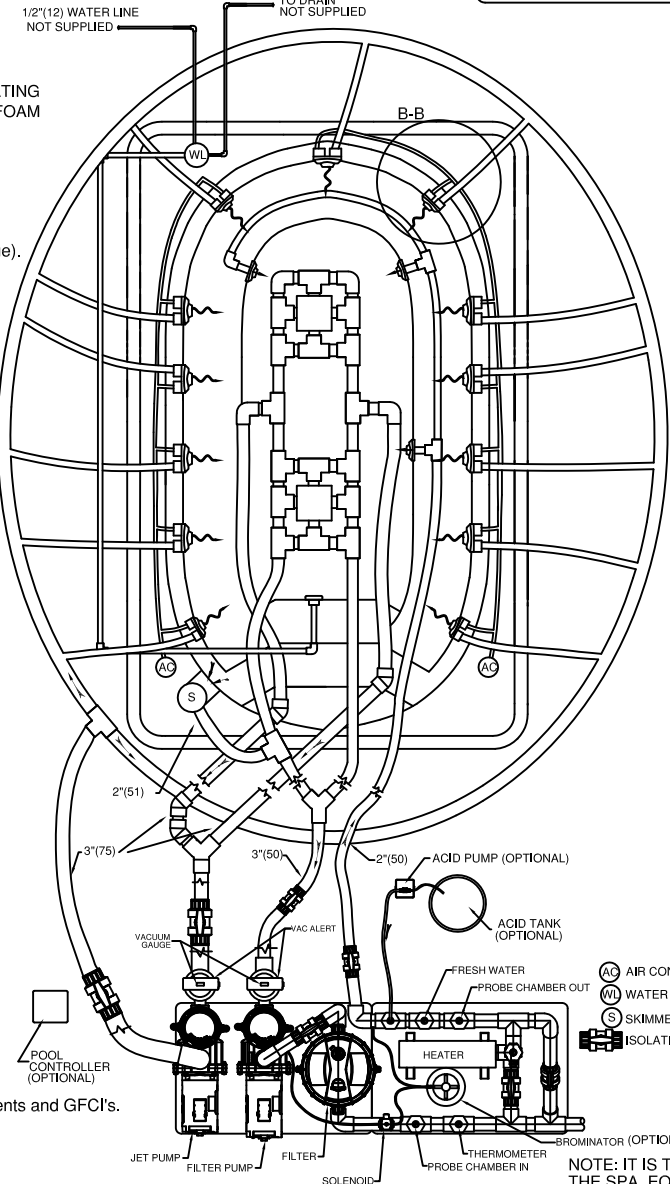
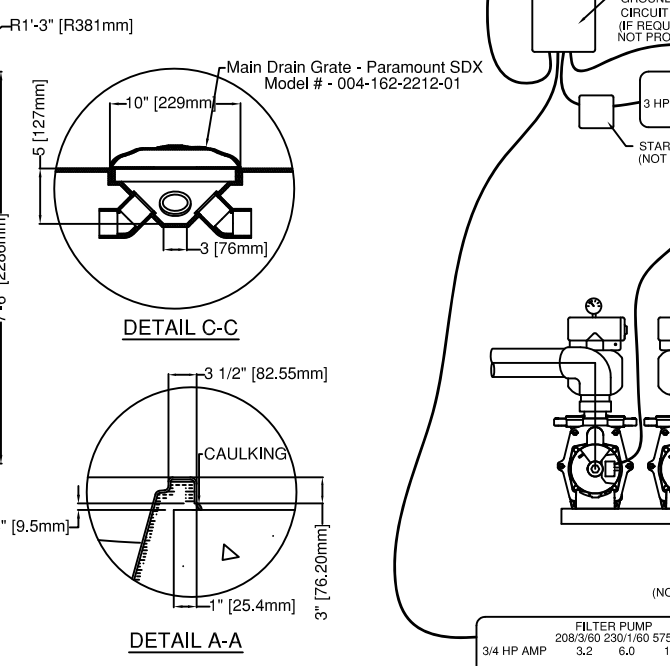
www.hydrother.com

Project	
Title HYDROTHER Model H - 1200 C 2015 Model Year	
Drawn By	ADP
Scale	n.t.s.
Date	Apr. 04/12
Ch'd By	dp
Job No.	1



- SPECIFICATIONS**
- The shell of the hot tub shall be manufactured of vacuum formed acrylic (.187 sheet) in one of two colours; Biscuit (Ivory Bone), Caribbean Quarite (Medium Blue). Hot tub shell overall dimensions: 144" x 92" x 42.5" deep. See dimensional information on this sheet.
 - The acrylic shall be further reinforced with fiberglass resins but may require additional on-site bracing supports (customer's responsibility) under the steps and seats.
 - The shell shall have the following fittings:
 - 9 Large hydrotherapy jets
 - 4 Medium hydrotherapy jets
 - 1 Wide mouth skimmer, (N.S.F. Listed)
 - 2 Built in bottom drain sumps with removable grate
 - 2 Air control valves
 - 1 Water level tank fitting with remote water level control tank
 - 3 Filtered water return inlets
 - The hot tub will be insulated with a coating of polyurethane foam, factory plumbed and hydrostatically tested.
 - Recommended HCSP-4 mechanical support system will be shipped on a separate plastic base and shall consist of:
 - 1 3/4hp filter pump (N.S.F. Listed)
 - 1 150 sq.ft. cartridge filter 9N.S.F. Listed
 - 1 3 hp hydrotherapy booster pump (N.S.F. Listed)
 - 1 15 kW electric heater c/w flow switch
 - 2 Inline thermometers c/w thermowell
 - 1 Inline flowmeter
 - 1 Water level controller with overflow (located at the shell)
 - Optional Equipment
 - 1 Chemistry Control pack (Optional)
 - 1 Acid feed pump with 15 gal solution tank c/w lid (Optional)
 - 1 15 Minute timer for jet pump c/w contactor (Optional)
 - 1 Audio/Visual alarm beacon (Optional)
 - 1 Handrail with anchor and escutcheon plates or deck flange (Optional)
 - 2 VA2000 Vacuum Release devices (ASME A112.1917-2002 Listed) (Optional)
 - Warranties shall be 5 year on the shell structure, 2 years on the acrylic surface and one year on the plumbing, labor, accessories and parts. On-site plumbing is NOT covered.
 - Installation items NOT covered by this specification and considered "by others" are Plumbing between the spa shell and mechanical equipment location. Electrical connections, motor, heater and component connections including motor starters, timers, push/pull switches, A/V alarm, grounding of all electrical components and GFCI's. Decking and access steps including deck drains. Supports under the seats and steps of the shell.

RIGID PLUMBING AVAILABLE AS UPGRADE



HYDRAULIC DESIGN
SPA VOLUME 840 usg
3180 Litre
TURNOVER 15 minutes
FILTER FLOW RATE 56 usgpm @ 60' T.D.H.
211.9 LPM @ 17.92 M hd
FILTER AREA 150 sq.ft.
13.9 sq.m.
OPERATING @.370 usgpm/sq.ft.
@ .22 L / S/ M.
FILTER PUMP 3/4 hp

13 HYDROTHERAPY FITTINGS
9 LARGE OPERATING @ 13 usgpm/ 49.2 Lpm
4 SMALL OPERATING @ 6 usgpm/ 22.7 Lpm
HYDROTHERAPY FLOW RATE 141 usgpm @ 60' TDH
533.7 LPM @ 17.92 M hd
HYDROTHERAPY PUMP 3 hp

TOTAL FLOW RATE 197 usgpm/745.7 Lpm
TOTAL OPEN AREA OF MAIN DRAINS 86.40 sq.in./ 557.4 sq.cm.
VELOCITY THROUGH MAIN DRAINS .73 ft.sec/ 0.2225 m. sec

*Optional Sand Filter Available upon request please discuss with a Hydrother Representative

NOTE: IT IS THE RESPONSIBILITY OF THE INSTALLER/OWNER TO VERIFY THAT THE SPA, EQUIPMENT AND SYSTEMS COMPLY WITH CODE REQUIREMENTS.