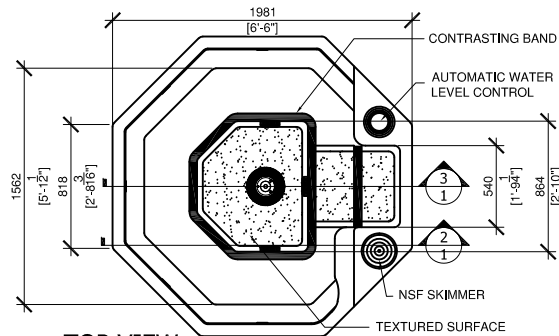


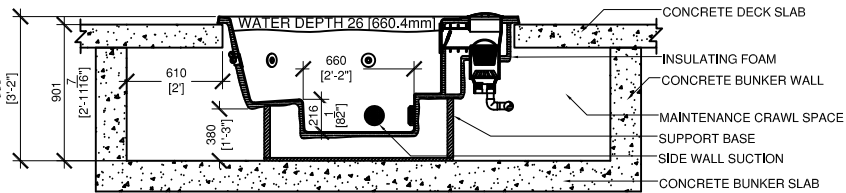
SHELL DIMENSIONS			
LENGTH	WIDTH	HEIGHT	VOLUME
78" [1981mm]	78" [1981mm]	38" [965mm]	@375 G/ 1420 L

WEIGHT EMPTY	WEIGHT FULL	SURFACE AREA
680 lbs/ 309 kg	3804 lbs/ 1727 kg	26 sq.ft [2.41sq.m]

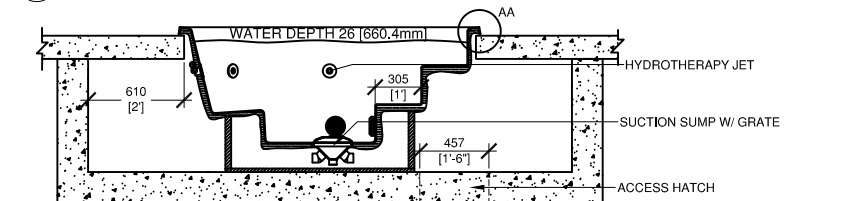
NOTE: Dimensions may differ up to 1/2" (13mm) between Spas. Exact measurements should be obtained from delivered unit.



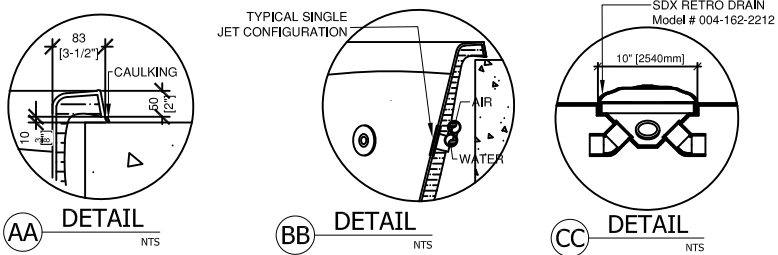
1 TOP VIEW



2 SECTION



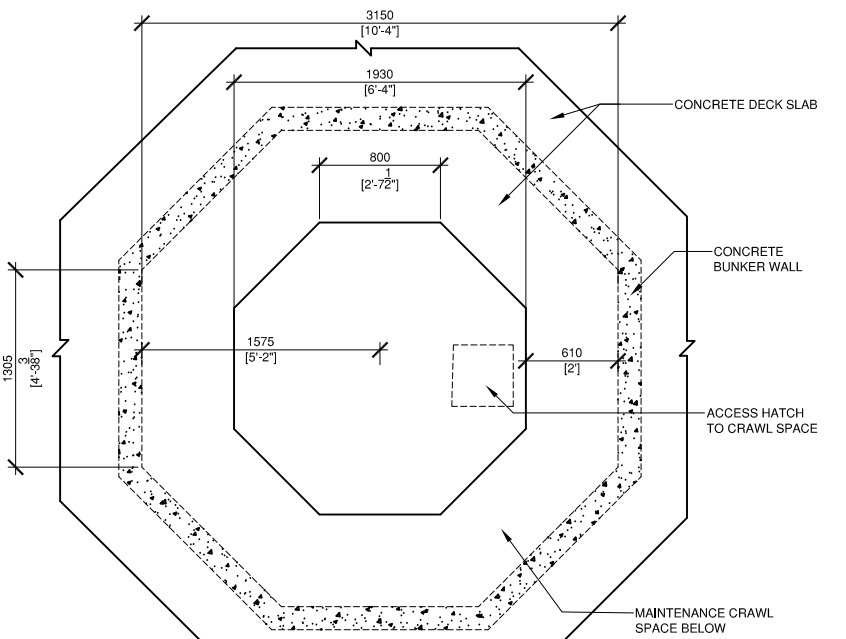
3 SECTION



AA DETAIL

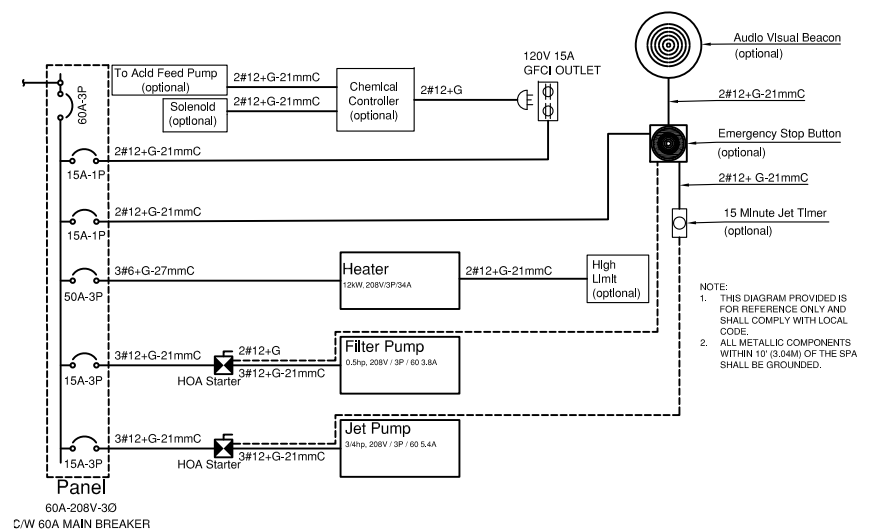
BB DETAIL

CC DETAIL

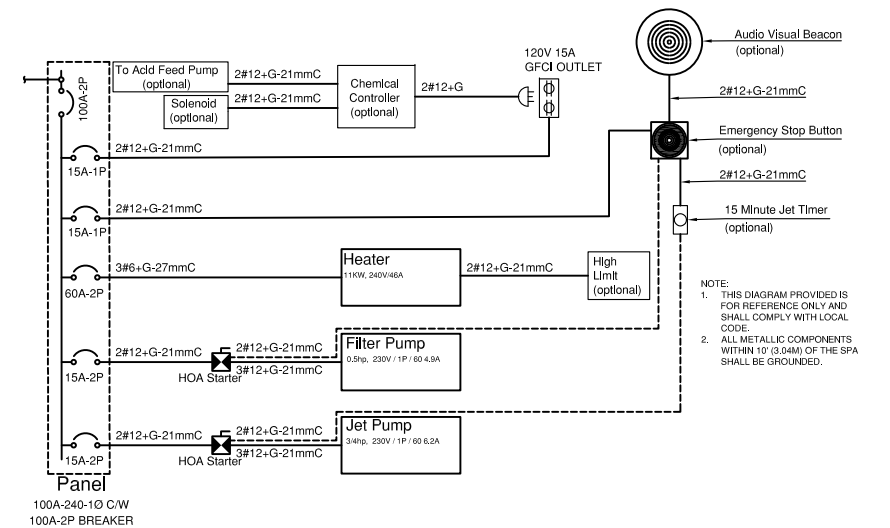


4 CONCRETE BUNKER

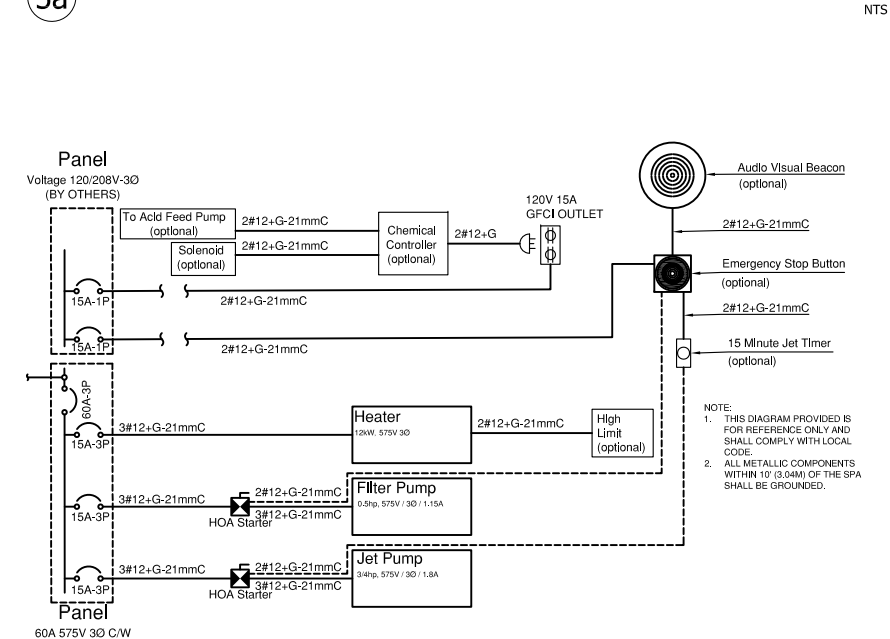
NOTE: CONCRETE BUNKER SHOWN IS BASED ON A RECOMMENDED DESIGN AND IS NOT REQUIRED IN ALL INSTANCES



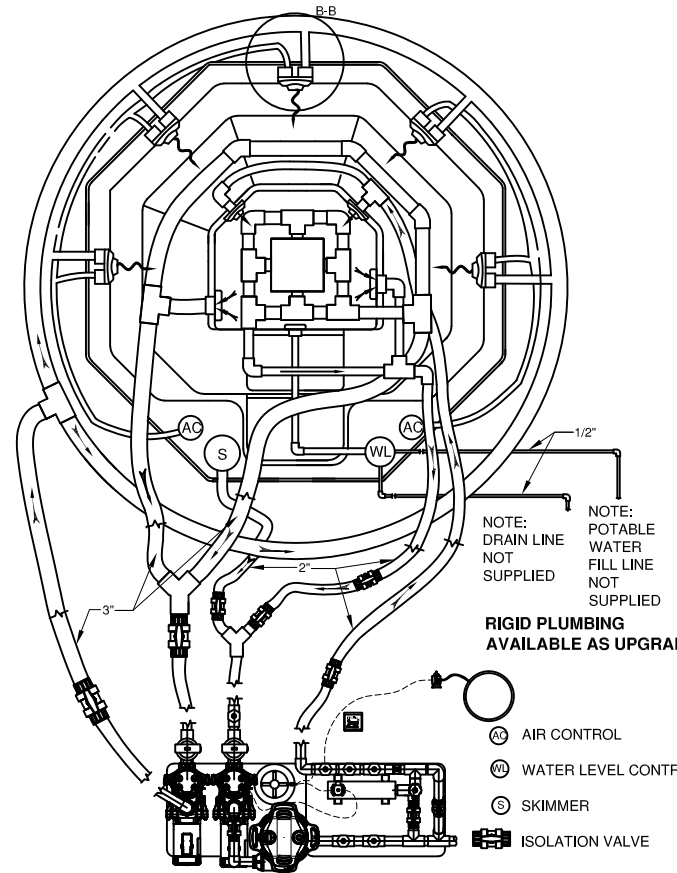
5 ELECTRICAL DIAGRAM 208v 3 SYSTEM



5a ELECTRICAL DIAGRAM 240v 1 SYSTEM

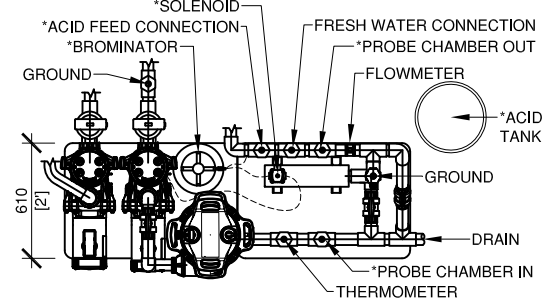


5b ELECTRICAL DIAGRAM 575V 3 SYSTEM

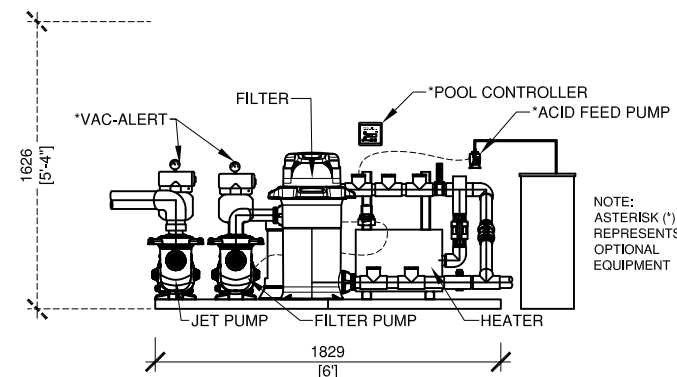


NOTE: IT IS THE RESPONSIBILITY OF THE INSTALLER/OWNER TO VERIFY THAT THE SPA, EQUIPMENT AND SYSTEMS COMPLY WITH CODE REQUIREMENTS.

6 PLUMBING DIAGRAM



7 MECHANICAL PACK TOP VIEW



NOTE: MECHANICAL PACK REQUIRES A TOP CLEARANCE OF 64" TO SERVICE THE CARTRIDGE FILTER

8 MECHANICAL PACK FRONT VIEW

SPECIFICATIONS

- The shell of the hot tub shall be manufactured of vacuum formed acrylic (.187 sheet) in POLAR WHITE. Hot tub shell overall dimensions: 78" x 78" x 38" deep. See dimensional information on this sheet.
 - The acrylic shall be further reinforced with fiberglass resins but may require additional on-site bracing supports (customer's responsibility) under the steps and seats.
 - The shell shall have the following fittings:
 - 5 Large hydrotherapy jets
 - 1 Skimmer, (NSF Listed)
 - 1 Built in bottom drain sumps w/ removable grate
 - 2 Side wall suction fittings (ANSI/ASME A112.19.M Listed)
 - 2 Air control valves
 - 1 Water level tank fitting
 - 1 Water Level Controller
 - 2 Filtered water return inlets
 - The hot tub will be insulated with a coating of polyurethane foam, factory plumbed and hydrostatically tested.
 - Recommended HCSP 1 mechanical support system will be shipped on a separate plastic base and shall consist of:
 - 1 1/2hp filter pump (NSF Listed)
 - 1 100 sq.ft. cartridge filter (NSF Listed)
 - 1 3/4 hp hydrotherapy booster pump (NSF Listed)
 - 1 11 kW or 12 kW (if 30 is selected) electric heater c/w flow switch
 - 2 In-line thermometers c/w thermowell
 - 1 In-line flow-meter
 - 1 Water level controller with overflow (located at the shell)
 - Optional Items
 - Waterline Tile
 - 12V Underwater LED Light
 - External Hi-Limit Switch
 - Electronic Countdown Timer
 - Emergency Push/Pull Button
 - Audio Visual Beacon
 - Safety Vacuum Release Systems
 - Chemical Automation System
 - Substitute for Second Feed Pump and Tank
 - UV Sanitizer
 - Substitute for Sand Filter NSF Listed
 - Gas Heater
 - Rigid Plumbing
 - Additional R12 Insulation
 - P-Rail with Flanges
 - P-Rail with Anchors
 - Safety Cover 4" - 3" Tapered Hard Cover
 - Warranties shall be 5 year on the shell structure, 2 years on the acrylic surface and one year on the plumbing, labor, accessories and parts. On-site plumbing is NOT covered.
 - Installation items NOT covered by this specification and considered "by others" are:
 - Plumbing services including sanitary and water to the equipment room. Plumbing between the spa shell and mechanical equipment
 - location, Heating and ventilation in the equipment room.
 - Electrical service connections from the building services to the electrical panel(s), motor, heater and component connections including motor starters, timers, push/pull switches, A/V alarm, grounding of all electrical components and GFCI's
 - Decking and access steps including deck drains.
 - Supports under the seats and steps of the shell.
- NOTE: All equipment UL and ULC approved. All fittings NSF and ANSI/ASME LISTED. All submerged suction fittings are VGB Compliant.
- HYDRAULIC DESIGN**
- | | |
|--|-----------------------------|
| SPA VOLUME | 375 usg |
| | 1420 Litre |
| TURNOVER | 12.5 minutes |
| FILTER FLOW RATE | 30 usgpm @ 55° T.D.H. |
| | 113.5 LPM @ 16.76 M hd |
| FILTER AREA | 100 sq.ft. |
| | 9.29 sq.m. |
| OPERATING | @0.30 usgpm/sq.ft. |
| | @0.204 L/s/m² |
| FILTER PUMP 1/2 hp | |
| 5 HYDROTHERAPY FITTINGS | |
| 5 LARGE OPERATING @ 15 usgpm/56.78 Lpm | |
| HYDROTHERAPY FLOW RATE | |
| | 75 usgpm @ 55° TDH |
| | 284 LPM @ 16.76 M hd |
| HYDROTHERAPY PUMP 3/4 hp | |
| TOTAL FLOW RATE | |
| | 105 usgpm/397.5 Lpm |
| TOTAL OPEN AREA OF MAIN DRAINS | |
| | 61.241 sq.in./ 395.1 sq.cm. |
| VELOCITY THROUGH MAIN DRAINS | |
| | .55 ft.sec/ 0.168m. sec |



THIS DRAWING AND THE IDEAS, CONCEPTS, ILLUSTRATIVE AND WRITTEN INFORMATION REPRESENTED THEREBY ARE THE PROPERTY OF HYDROTHER. REPRODUCTION OF ALL OR ANY PART OF THIS DRAWING OR PRINTS THEREOF, OR ANY OTHER UTILIZATION OF ANY CONFIDENTIAL AND PROPRIETARY PROPERTY CONTAINED HEREIN WITHOUT THE PERMISSION OF HYDROTHER IS FORBIDDEN.

No.	Date	Description
		Revisions

HYDROTHER
5170A TIMBERLEA BLVD.
MISSISSAUGA, ONT.
L4W 2S5
1 800 891 5811
WWW.HYDROTHER.COM

Project	Hydrother
Title	H-600C
Drawn By:	ML
Scale:	NTS
Date:	Jan 2019
Chk'd By:	BRB
Job No.:	H600-19